



Attachment A

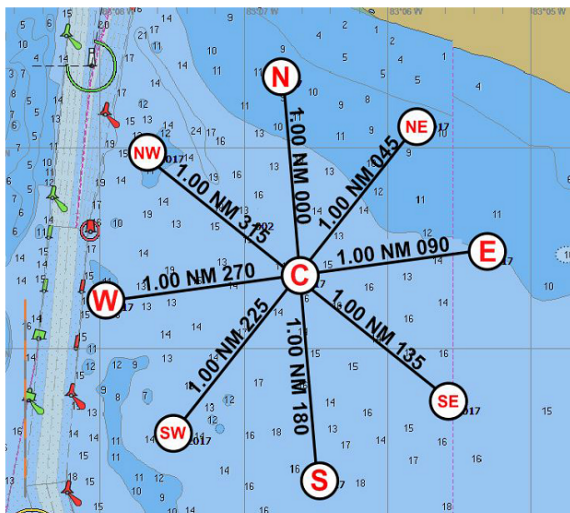
Ford Yacht Club
Race Committee

Solo Race

The course will be sailed using the West Shore Sail Club WNATR buoys. Buoy locations and courses will be discussed a

**2017 West Shore Sail Club
Wednesday Night at the Races
Course Diagram
(Not to be used for navigation)**

C	N42.01.3854	W083.06.6223
E	N42.01.4959	W083.05.3077
NE	N42.02.1653	W083.05.8038
N	N42.02.3802	W083.06.7850
NW	N42.02.0057	W083.07.6806
W	N42.01.2687	W083.07.9782
SW	N42.00.6022	W083.07.4780
S	N42.00.3872	W083.06.4776
SE	N42.00.7527	W083.05.5806



2018 Solo Race Courses

Course	Description	Distance (Nm)	Marks
N1	W/L	4	C-Np-Sp-C
NW1	W/L	4	C-NWp-SEp-C
W1	W/L	4	C-Wp-Ep-C
SW1	W/L	4	C-SWp-NEp-C
S1	W/L	4	C-Sp-Np-C
SE1	W/L	4	C-SEp-NWp-C
E1	W/L	4	C-Ep-Wp-C
NE1	W/L	4	C-Nep-SWp-C

Course	Description	Distance (Nm)	Marks
N2	Trapeziod	5	C-Np-NWp-SWp-Sp-C
NW2	Trapeziod	5	C-NWp-Wp-Sp-SEp-C
W2	Trapeziod	5	C-Wp-SWp-SEp-Ep-C
SW2	Trapeziod	4.9	C-SWp-Sp-Ep-NEp-C
S2	Trapeziod	4.8	C-Sp-SEp-NEp-Np-C
SE2	Trapeziod	4.9	C-SEp-Ep-Np-NWp-C
E2	Trapeziod	4.8	C-Ep-Nep-NWp-Wp-C
NE2	Trapeziod	4.8	C-NEp-Np-Wp-SWp-C